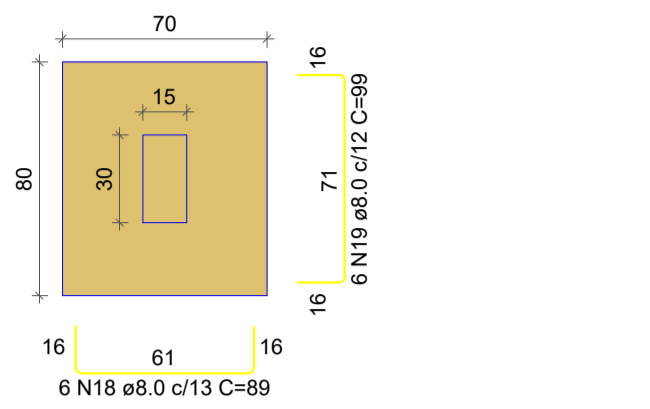


P1=P2=P3=P4=P5=P6=P7=P8=P9=P10

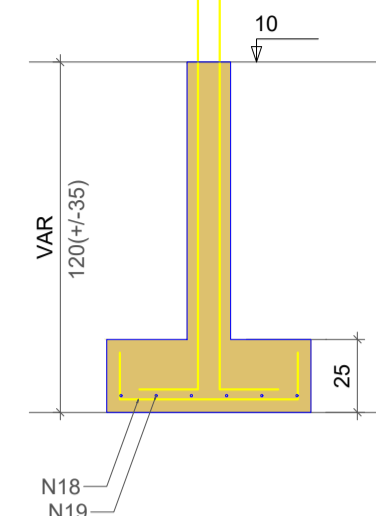
S1=S2=S3=S4=S5=S6=S7=S8=S9=S10

PLANTA ESC 1:25



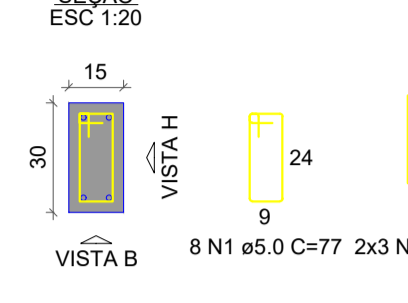
Solo com capacidade de suporte > 2.00 kgf/cm²
Solo compactado sobre a sapata
peso específico > 1600.00 kg/m³

CORTE ESC 1:25

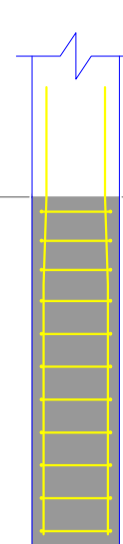


FUNDAÇÃO - L1

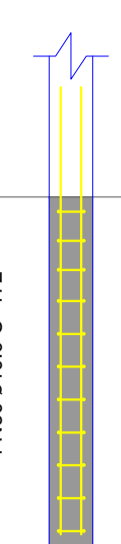
SEÇÃO ESC 1:20



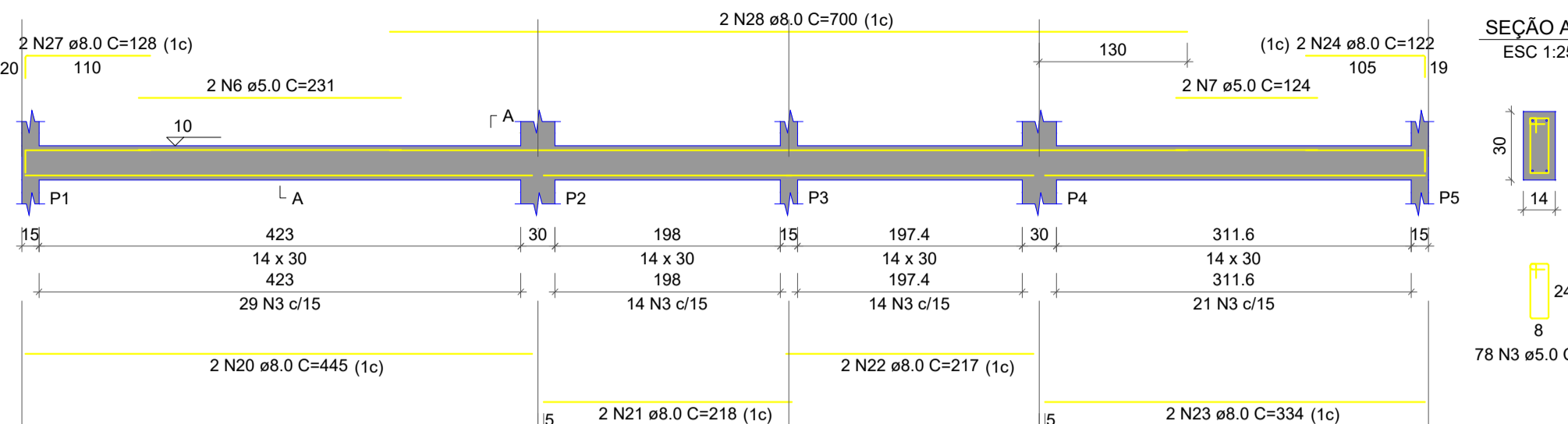
VISTA H ESC 1:25



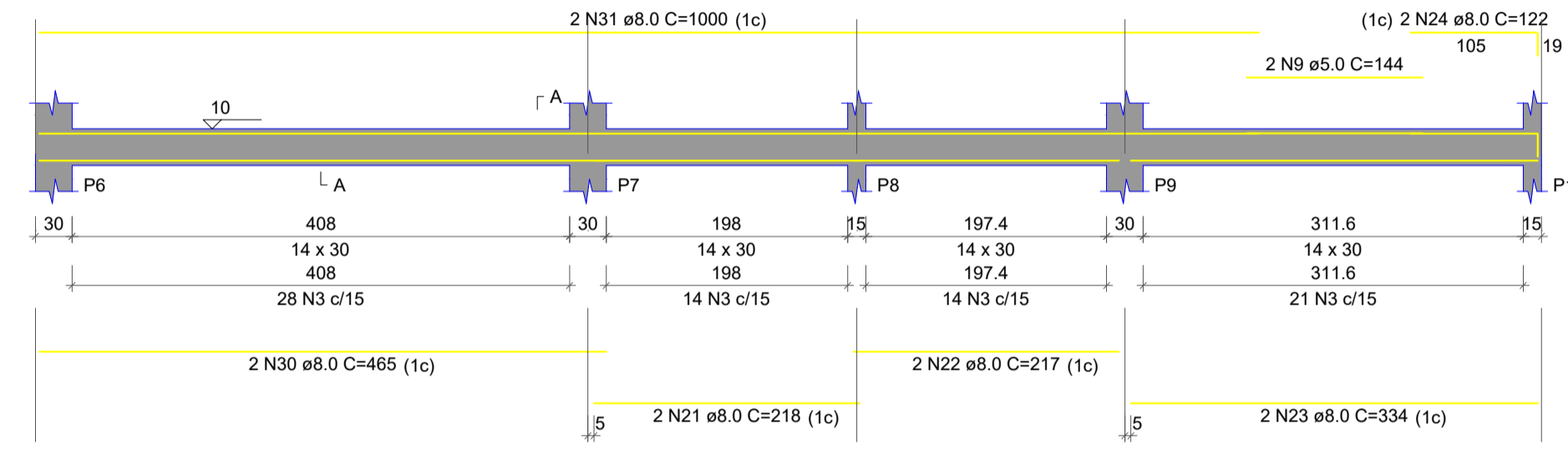
VISTA B ESC 1:25



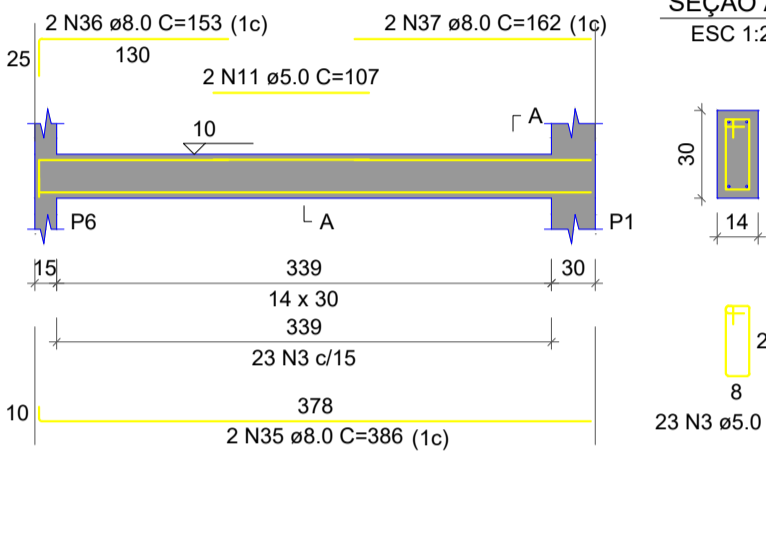
V1 ESC 1:50



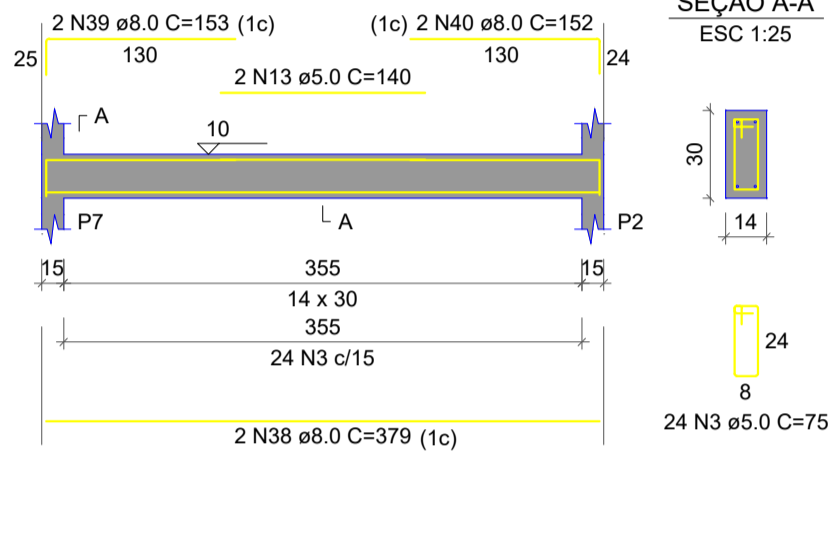
V2 ESC 1:50



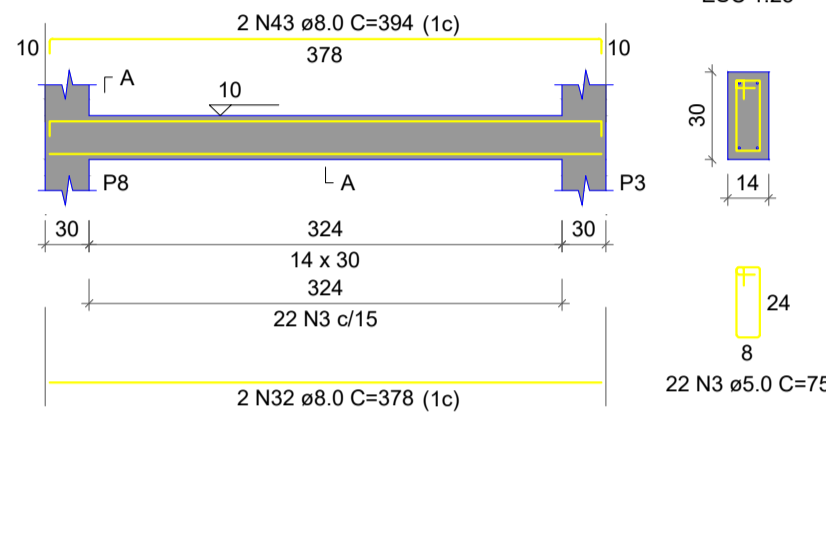
V3 ESC 1:50



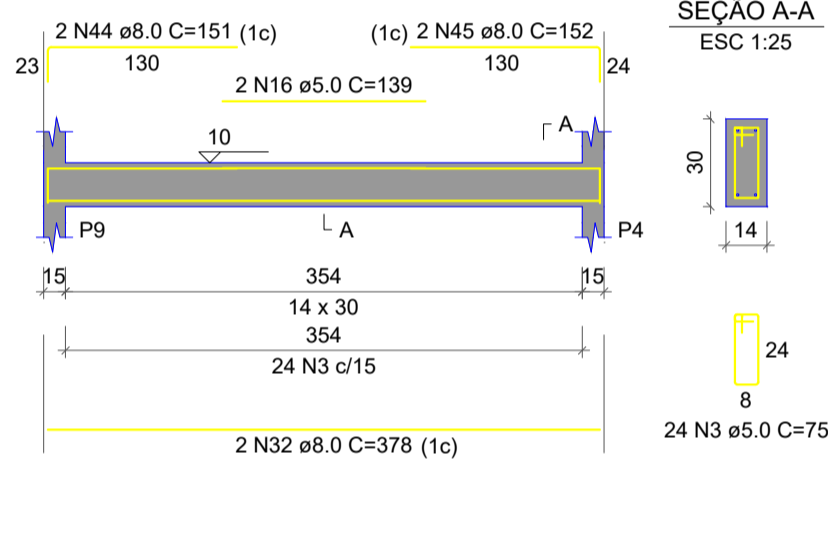
V4 ESC 1:50



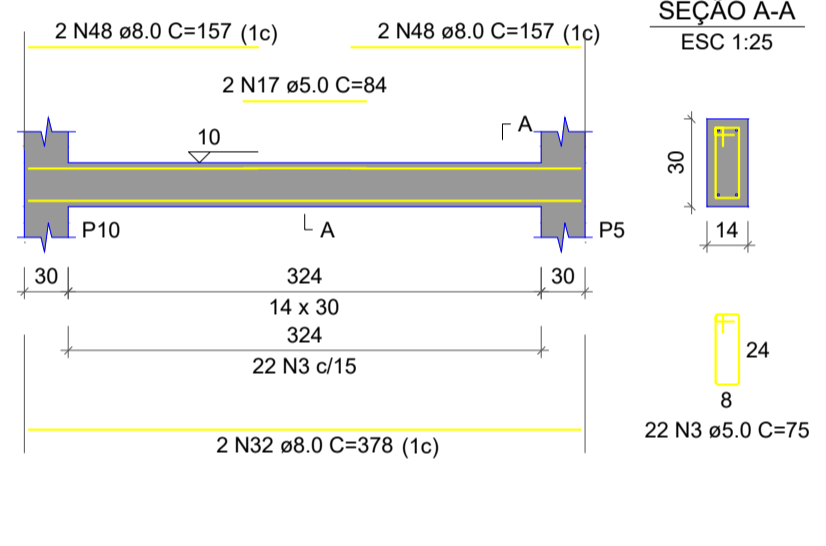
V5 ESC 1:50



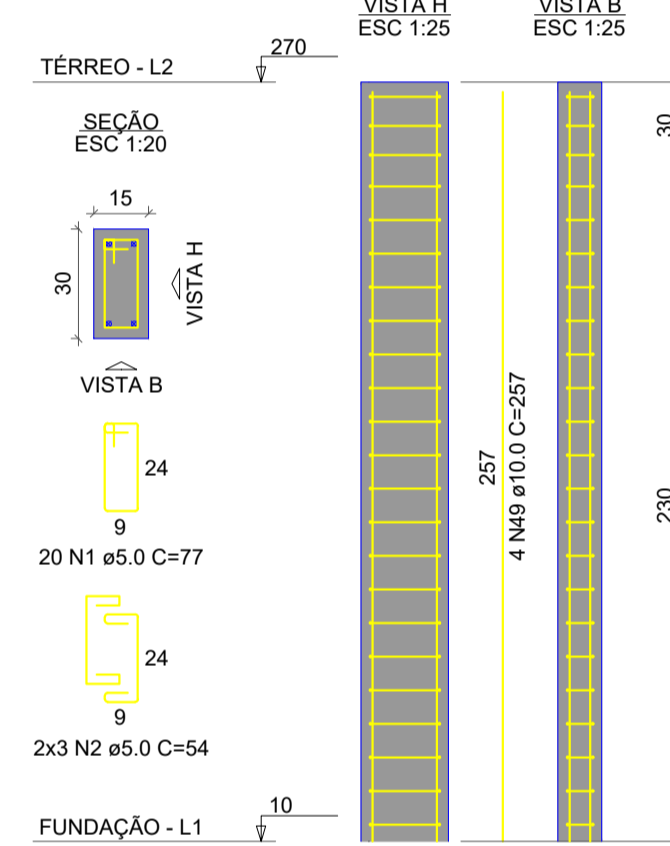
V6 ESC 1:50



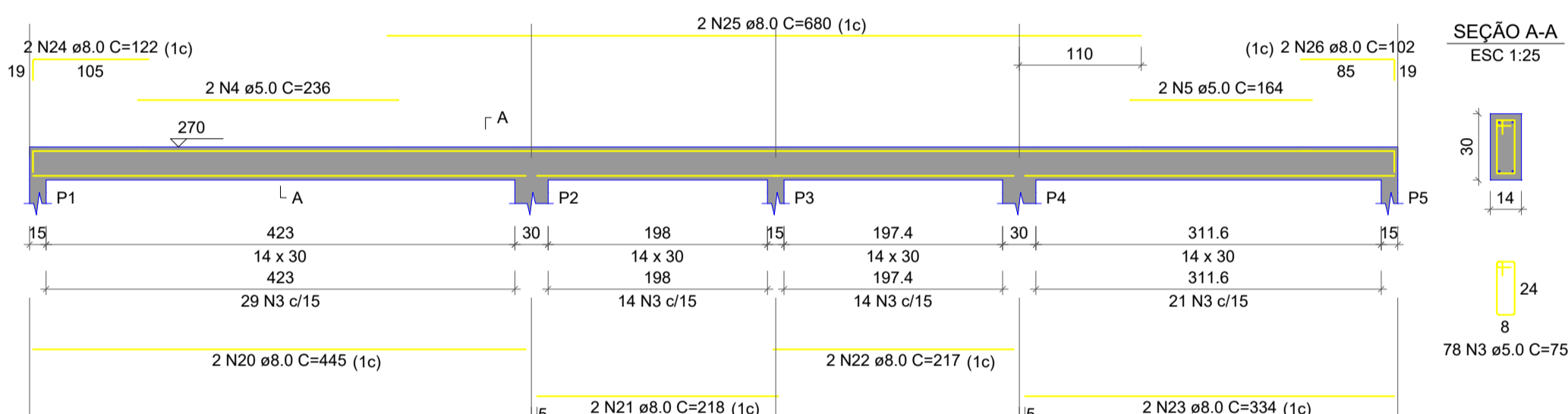
V7 ESC 1:50



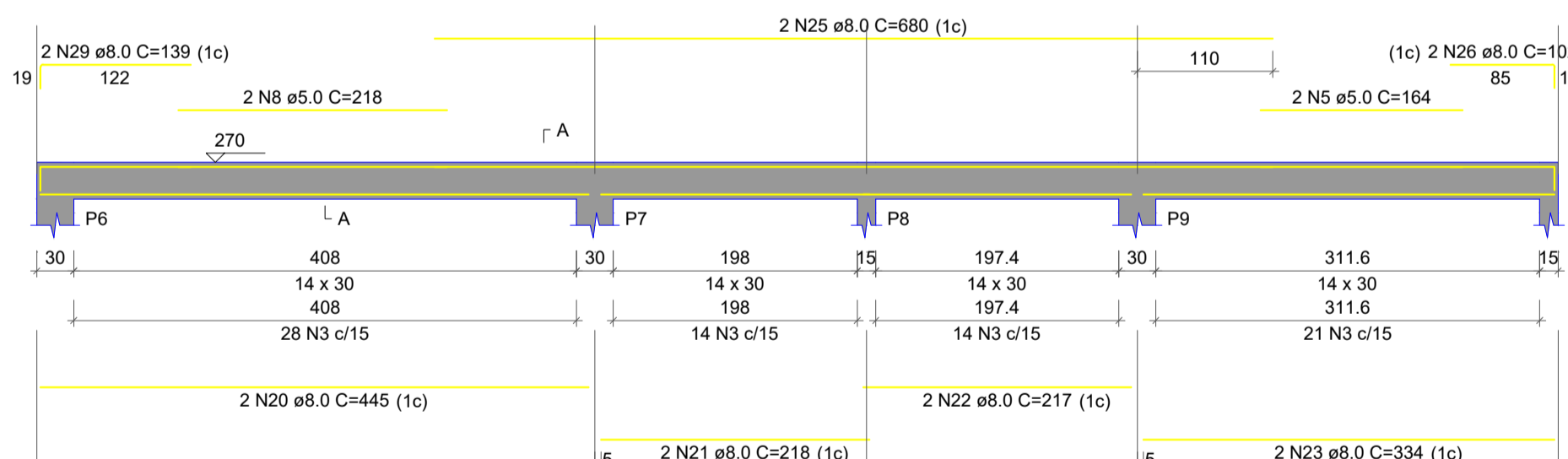
P1=P2=P3=P4=P5=P6=P7=P8=P9=P10



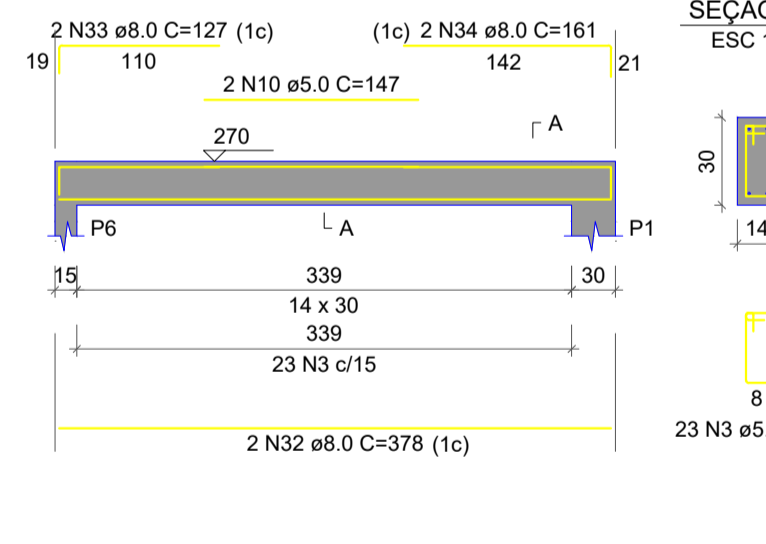
V1 ESC 1:50



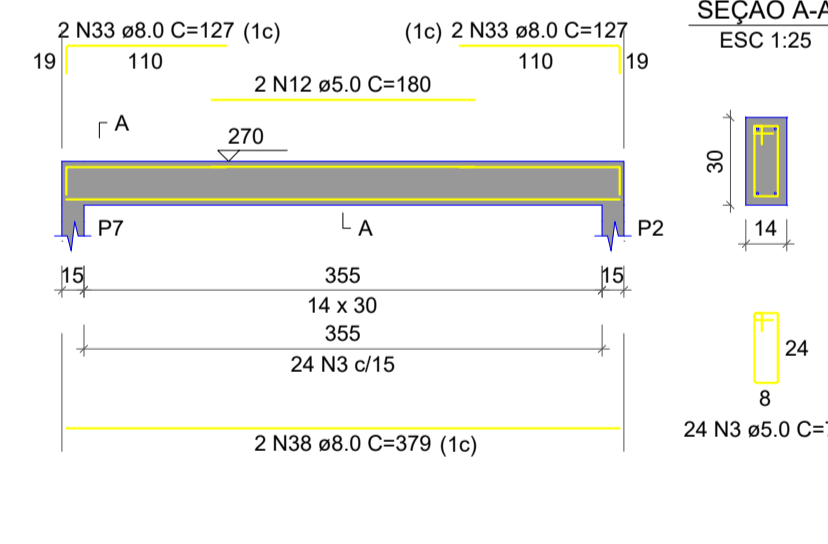
V2 ESC 1:50



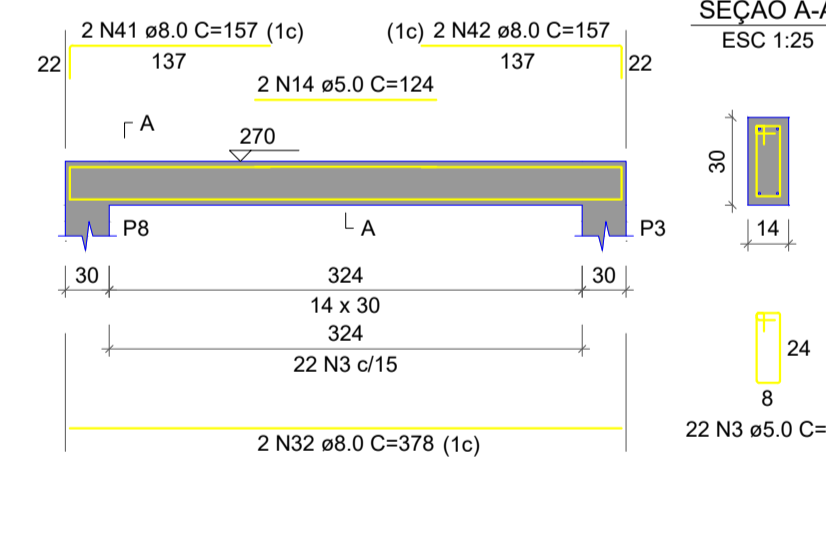
V3 ESC 1:50



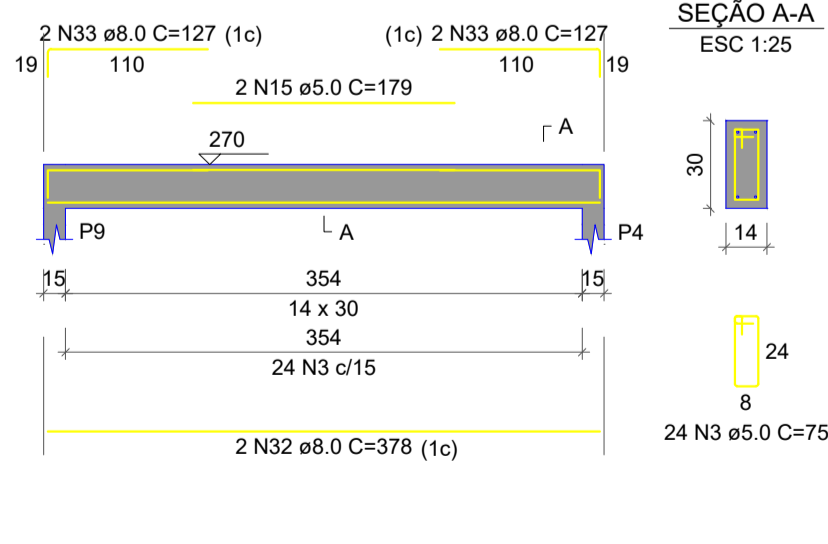
V4 ESC 1:50



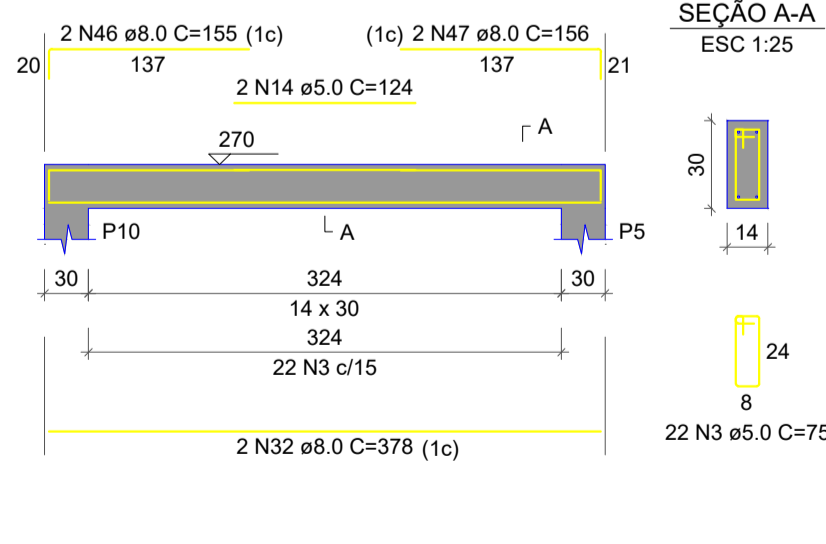
V5 ESC 1:50



V6 ESC 1:50



V7 ESC 1:50



RELAÇÃO DO AÇO

AÇO	N	DIAM (mm)	QUANT	C.UNIT (cm)	C.TOTAL (cm)
CA60	1	5.0	280	77	21560
	2	5.0	120	54	6480
	3	5.0	540	75	40500
	4	5.0	2	236	472
	5	5.0	4	164	656
	6	5.0	2	231	462
	7	5.0	2	124	248
	8	5.0	2	218	436
	9	5.0	2	144	288
	10	5.0	2	147	294
	11	5.0	2	107	214
	12	5.0	2	180	360
	13	5.0	2	140	280
	14	5.0	4	124	496
	15	5.0	2	179	358
	16	5.0	2	139	278
	17	5.0	2	84	168
CA50	18	8.0	60	89	5340
	19	8.0	60	99	5940
	20	8.0	6	445	2670
	21	8.0	8	218	1744
	22	8.0	8	217	1736
	23	8.0	8	334	2672
	24	8.0	6	122	732
	25	8.0	4	680	2720
	26	8.0	4	102	408
	27	8.0	2	128	256
	28	8.0	2	700	1400
	29	8.0	2	139	278
	30	8.0	2	465	930
	31	8.0	2	1000	2000
	32	8.0	14	378	5292
	33	8.0	10	127	1270
	34	8.0	2	161	322
	35	8.0	2	386	772
	36	8.0	2	153	306
	37	8.0	2	162	324
	38	8.0	4	379	1516
	39	8.0	2	153	306
	40	8.0	2	152	304
	41	8.0	2	157	314
	42	8.0	2	157	314
	43	8.0	2	394	788
	44	8.0	2	151	302
	45	8.0	2	152	304
	46	8.0	2	155	310
	47	8.0	2	156	312
	48	8.0	4	157	628
	49	10.0	40	257	10280
	50	10.0	40	172	6880

RESUMO DO AÇO

AÇO	DIAM (mm)	C.TOTAL (m)	PESO + 10% (kg)
CA50	8.0	425.1	184.5
CA60	10.0	171.6	116.4
CA60	5.0	735.5	124.7
PESO TOTAL (kg)			
CA50		300.9	
CA60		124.7	

Volume de concreto (C-25) = 6.80 m³
Área de forma = 106.69 m²

PREFEITURA MUNICIPAL DE PONTE ALTA DO NORTE - SC

Projeto: Banheiro Quadra Recanto da Criança - Estrutural

Proprietário:
Prefeitura Municipal de Ponte Alta do Norte

Localização:
Rua Francelio Oliveira da Silva

Referência
ESTRUTURAL
FUNDAÇÃO
TÉRREO

Responsável Técnico:
Louise Zenni da Silva
Arquiteta e Urbanista
CAU A195251-0

Área
47,70m²
Data
17/03/2022

Prancha
02/02